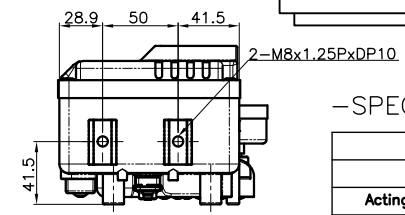
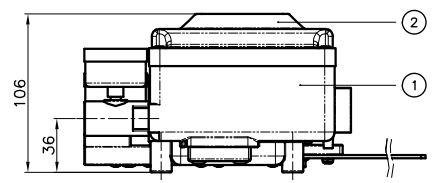
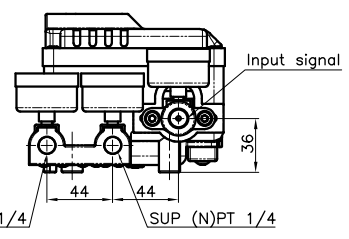
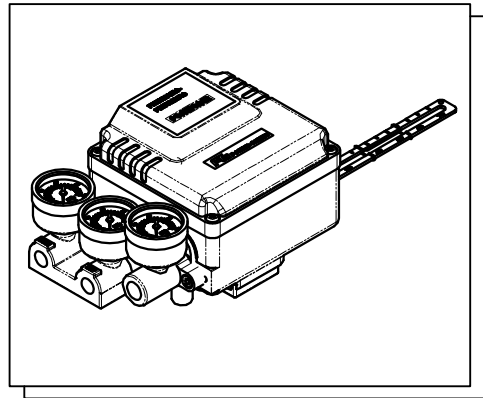
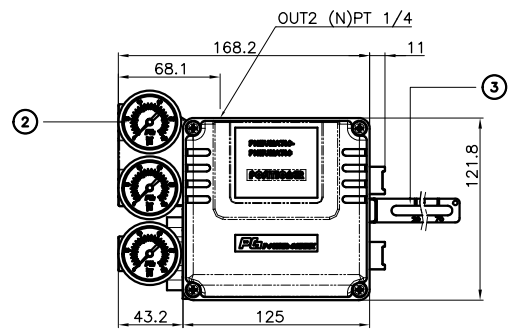


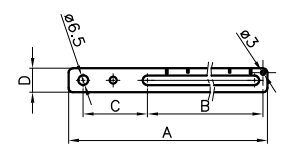
| REV. NO. | REVISION DESCRIPTION | DATE | APPROVED |
|----------|----------------------|------|----------|
| A | Issue for approval | | |



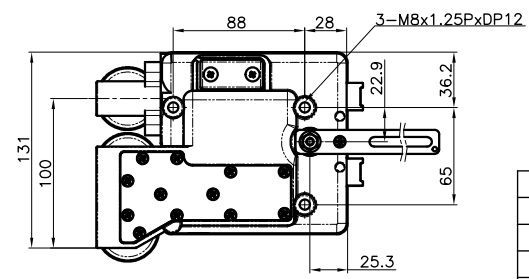
-SPECIFICATIONS

| PPL | | |
|------------------------------|----------------------------|--------------------|
| Linear Type (Lever Feedback) | | |
| Acting Type | Single | Double |
| Input Signal | 0.2 - 1.0 bar (3 - 15 psi) | |
| Supply Air Pressure | Max. 7.0 bar (100 psi) | |
| Standard Stroke | 10 ~ 80mm | |
| Pneumatic Connections | PT(Rc) 1/4 or NPT 1/4 | |
| Ambient Temperature | -20 ~ +70°C | |
| Pressure Gauge | Stainless steel | |
| OutPut Characteristics | Linear | |
| Linearity | Within ± 1.0 % F.S | Within ± 1.5 % F.S |
| Sensitivity | Within ± 0.2 % F.S | Within ± 0.5 % F.S |
| Hysteresis | Within 1.0 % F.S | |
| Repeatability | Within ± 0.5 % F.S | |
| Air Consumption | 5 LPM (SUP. 1.4 bar) | |
| Flow Capacity | 80 LPM (SUP. 1.4 bar) | |
| Body Material | Aluminum die-cast | |
| Weight | 2.1 kg | |

OUT1 (N)PT 1/4 SUP (N)PT 1/4



| LEVER TYPE | SIZE -A- | SIZE -B- | SIZE -C- | SIZE -D- |
|----------------------|----------|----------|----------|----------|
| LEVER -A- (10~40mm) | 133 | 71 | 43 | 16 |
| LEVER -B- (10~80mm) | 194 | 133 | 43 | 16 |
| LEVER -C- (80~150mm) | 280 | 150 | 92 | 16 |



| NO. | PART NAME | MATERIAL | Q'Ty |
|-----|----------------|----------|------|
| 4 | PRESSURE GAUGE | STS304 | 2 |
| 3 | FEEDBACK LEVER | STS304 | 1 |
| 2 | BASE COVER | ALDC12 | 1 |
| 1 | BASE BODY | ALDC12 | 1 |

| | Feedback Lever | Pressure Gauges | Pilot Valve Orifice | Connection Threads | Operating Temperature | Mounting Bracket |
|-----|---|--|---|---|--|--|
| PPL | <ul style="list-style-type: none"> □ A : Stroke (10 ~ 40mm) □ B : Stroke (10 ~ 80mm) □ C : Stroke (80 ~ 150mm) | <ul style="list-style-type: none"> □ 1 : 6 bar (90psi) □ 2 : 10 bar (150psi) | <ul style="list-style-type: none"> □ S : Standard □ M : Small orifice (1.0 or 0.7) | <ul style="list-style-type: none"> □ 3 : PT(Rc) 1/4 □ 4 : NPT 1/4 | <ul style="list-style-type: none"> □ T : 70°C (standard) □ H : 120°C □ L : - 40°C | <ul style="list-style-type: none"> □ N : None □ L : DIN / IEC60534-6-1 |

| | | | |
|--|----------------|--------|-----|
| PG POWER-GENEX <small>http://www.power-genex.com</small> | | | |
| NAME | SIGNATURE | PROJ : | 3rd |
| DRAWN | Kim. D. H | | |
| CHECKED | Kim. K. W | | |
| APPROVED | Kim. K. W | SIZE : | A3 |
| DATE | | | |
| QUANTITY | DIMENSION : mm | | |
| | SHEET 1 OF 1 | | |

| | |
|----------------|--------------------------------------|
| TITLE : | PNEUMATIC PNEUMATIC POSITIONER (PPL) |
| PRODUCT NAME : | |
| MODEL : | PPL |
| DWG NO. | PG-EP-PP-01 |
| REV. NO. | A |