

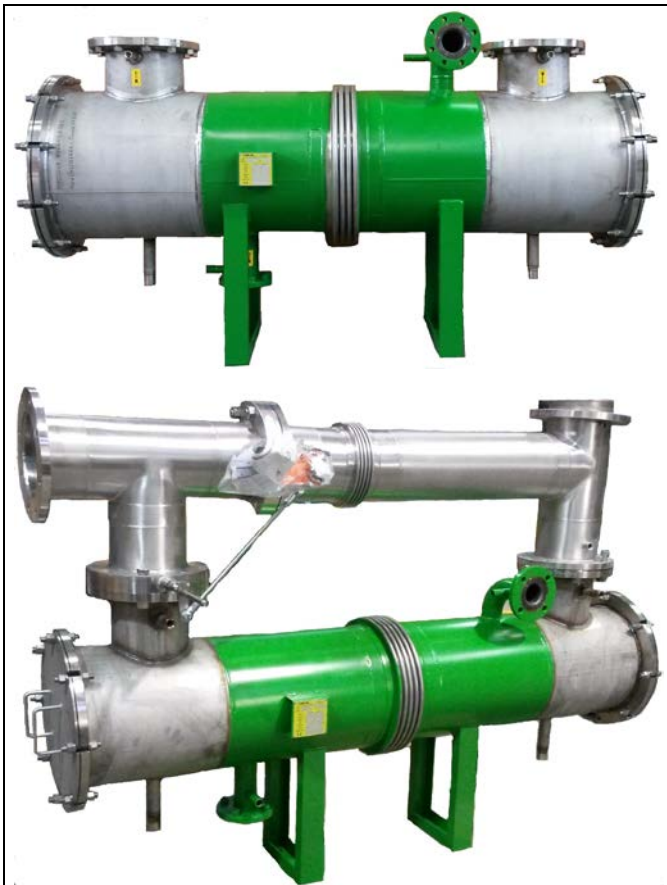
EXCHANGERS - RECUPERATORS EXHAUST GASES / WATER – AEL Series

GREEN line

AEL/E

03 2018

FIXED PLATED STRAIGHT TUBES and DISTRIBUTION HEADS



DESCRIPTION

The AEL Series exchangers have been designed to recover the residual heat of the endothermic engines combustion products mounted on generators and heating water in a closed circuit. Use with water temperature lower than 50 ° C is not recommended. They are suitable for exchanging the gas up to an operating temperature of 550 ° C.

The AEL Series are PED 2014/68/UE Directive free for the tube side, while they comply with module 4/3 of the same Directive.

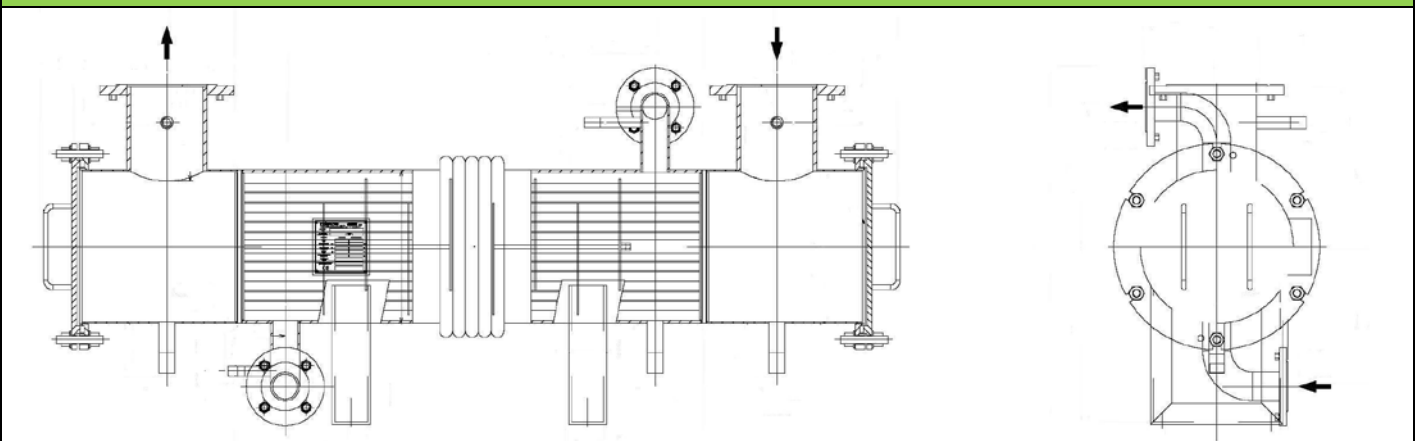
The parts in contact with the exhaust gases are made of AISI 304 or AISI 316 stainless steel to prevent corrosion. They are equipped with heads and inspection covers with double recessed gaskets.

On request they can be equipped with: by-pass pipeline with "dumper" valve for gas deviation.

PED 2014/68/UE

*PED Tube Side Free
Art.4 Par.3 Shell Side*

CONSTRUCTION CONFIGURATION (1)



Tube side connections PN 10 - Shell side connections PN 16

DESIGN PRESSURES

Tube Side	Shell Side
0,5 bar @ 0 / + 550 °C	12 bar @ 0 / +110 °C

Note (1) Possibility of having shell side connections on the same side.

Page 1/4

CONFLOW s.p.a.

COMPANY WITH
QUALITY SYSTEM
CERTIFIED BY DNV GL
= ISO 9001 =

Via Lecco, 69/71
20864 AGRATE BRIANZA (MB)
Tel. 039/651.705 - 650.397
Fax 039/654.018
e-mail: sales@conflow.it

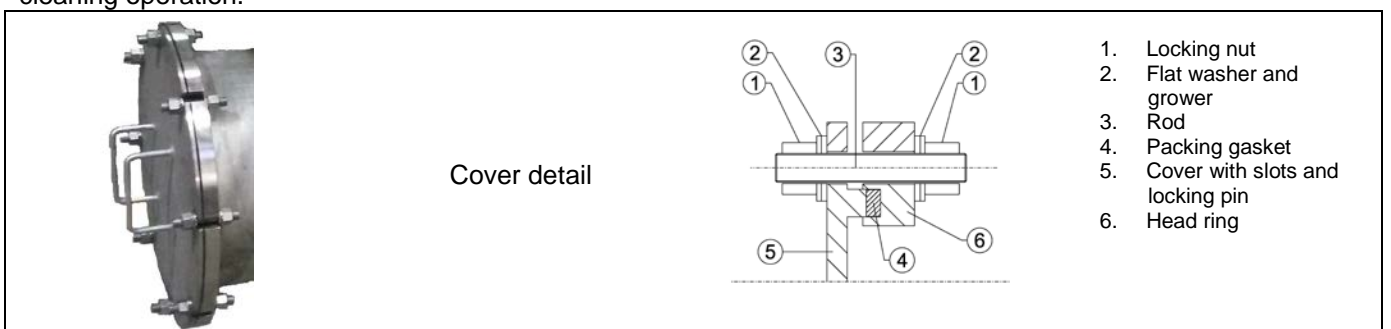
CONFIGURATION - materials

Tube sheets wafer	AISI 304L Stainless Steel
	AISI 316L Stainless Steel
	Other materials on request
Smooth tubes Welded on tube sheets	Ø 18 x 1
	AISI 304L A249 Stainless Steel
	AISI 316L A249 Stainless Steel
	Other materials and dimensions on request
Shell with carbon steel support painted RAL6010	Carbon Steel RAL 6010 painted
	AISI 304L Stainless Steel
	AISI 316L Stainless Steel
Expansion joint	AISI 321 Stainless Steel with AISI 316 tangs
Baffles	Carbon Steel
	AISI 304L Stainless Steel
	AISI 316L Stainless Steel
Heads welded on wafer plates	AISI 304L Stainless Steel
	AISI 316L Stainless Steel
Head covers and rings	AISI 304L Stainless Steel
	AISI 316L Stainless Steel
Head sealing gaskets	"Biograf" pure graphite packing 12x12 mm
Rods and Nuts	ASTM A 193 B8M
	ASTM A 194 Gr. 8M
Data Plate support	Carbon Steel (with carbon steel shell)
	AISI 304 Stainless Steel (with stainless steel shell)
Data Plate	Alluminium
	Stainless Steel AISI 304 on request

ACCESSORIES ON REQUEST

Supports	AISI 304 Stainless Steel
	AISI 316 Stainless Steel
Lifting eyebolts	Carbon Steel painted RAL 6010
	AISI 304 Stainless Steel

The AEL Series exchangers have been designed with easily removable covers in order to facilitate the pipe side cleaning operation.



Products Codification System

Example Code

VAEL	LL	5	10	08	P00	18	KX1
------	----	---	----	----	-----	----	-----

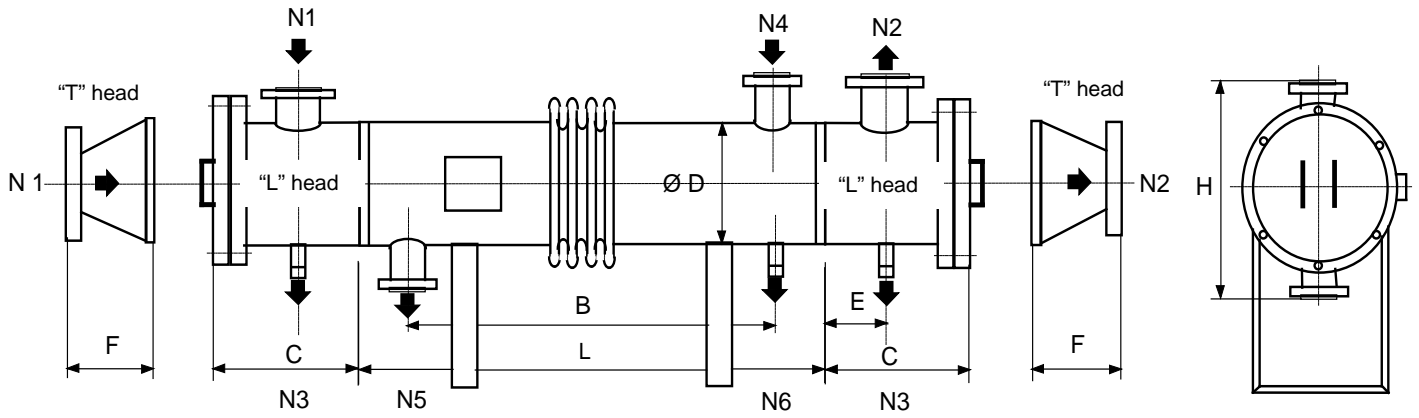
Series Identification	Head TYPE		Ø Exchanger		Straight part length mm		N° Baffles		Design Pressure barg (tube side)		Ø tube mm		Materials	
	LL	Side Side	2	Ø 168	10	1000	04	4	P00	0,5	18	18 x 1	X20	Tubes A304 Sheets A304 Heads A304 Shell Carb.
	TL	Head Side	3	Ø 219	12	1200	06	6			YY	Different tubes	X40	All A304
	TT	Head Head	4	Ø 273	15	1500	08	8					K1X	Tubes A316 Sheets A316 Heads A316 Shell Carb.
			5	Ø 324	20	2000	10	10					K40	All A316
			6	Ø 356	25	2500	12	12					Y00	Special mat.
			7	Ø 456			14	14						
			8	Ø 508			16	16						
			9	Ø 550			18	18						
			L	Ø 610			20	20						
			M	Ø 610										
			N	Ø 650										
			P	Ø 700										
			Q	Ø 750										
			R	Ø 800										

Follows code

A	00
----------	-----------

Shell side connections		Supports	
A	STD	00	Standard
B	1° increase	01	Horizontal supports Carbon Steel
C	2° increase	02	Horizontal supports AISI 304
L	Connections on the same side	03	Horizontal supports Carbon st. eyebolts
M	1° decrease	04	Horizontal supports AISI 304 eyebolts
N	2° decrease		
Y	Specials		

Models, Dimensions in mm, Connections and Weights to be defined when ordering according to the configuration



Size	Mod.	Ø D	L	B	C	E	F	H (1)	IN-OUT GAS N1-N2 PN 10	IN-OUT WATER N4-N5 PN 16	Water Discharge N6	N° 2 cond. Discharges N3
2	10	168	1000	810	380	135	To be defined	380	DN 80	DN 40	Ø 1"	Ø 1"
	12		1200	1010								
	15		1500	1310								
	20		2000	1810								
	25		2500	2310								
3	10	219	1000	810	380	120	To be defined	400	DN 80	DN 40	Ø 1"	Ø 1"
	12		1200	1010								
	15		1500	1310								
	20		2000	1810								
	25		2500	2310								
4	10	273	1000	800	410	125	To be defined	510	DN 100	DN 50	Ø 1"	Ø 1"
	12		1200	1000								
	15		1500	1300								
	20		2000	1800								
	25		2500	2300								
5	10	324	1000	800	460	150	To be defined	570	DN 150	DN 50	Ø 1"	Ø 1"
	12		1200	1000								
	15		1500	1300								
	20		2000	1800								
	25		2500	2300								
7	10	406	1000	840	510	175	To be defined	660	DN 150	DN 65	Ø 1"	Ø 1"
	12		1200	940								
	15		1500	1240								
	20		2000	1740								
	25		2500	2240								
9	10	508	1000	760	560	200	To be defined	760	DN 200	DN 80	Ø 1"	Ø 1"
	12		1200	960								
	15		1500	1260								
	20		2000	1760								
	25		2500	2260								
L	10	550	1000	760	605	225	To be defined	800	DN 250	DN 80	Ø 1"	Ø 1"
	12		1200	960								
	15		1500	1260								
	20		2000	1760								
	25		2500	2260								
M	10	610	1000	750	605	225	To be defined	860	DN 250	DN 100	Ø 1.1/2"	Ø 1.1/2"
	12		1200	950								
	15		1500	1250								
	20		2000	1750								
	25		2500	2250								
N	10	640	1000	730	660	250	To be defined	900	DN 300	DN 125	Ø 1.1/2"	Ø 1.1/2"
	12		1200	930								
	15		1500	1230								
	20		2000	1730								
	25		2500	2230								
Q	10	750	1000	700	800	340	To be defined	1010	DN 450	DN 150	Ø 1.1/2"	Ø 1.1/2"
	12		1200	900								
	15		1500	1200								
	20		2000	1700								
	25		2500	2200								
R	10	800	1000	700	850	360	To be defined	2120	DN 500	DN 150	Ø 1.1/2"	Ø 1.1/2"
	12		1200	900								
	15		1500	1200								
	20		2000	1700								
	25		2500	2200								

(1) Possibility to change dimensions if flanges are placed horizontally (nozzles with curves)

Specifications given are only indicative and not binding for the manufacturer who reserve the right to carry-out any modifications without prior notice. All data sheets by CONFLOW SpA, are available last update on our internet web site www.conflo.it.